

All rights reserved by **CNHi**.

The information contained in this catalogue is intended to be of a general nature only. **CNHi** may at any time and from time to time, for technical or other necessary reasons, modify any of the details or specifications of the product described in this catalogue.

To be sure of getting accurate, detailed and up-to-date information, an intending buyer should consult his nearest **CNHi** dealer or distributor.

Single item numeration method used in this catalogue may not be used without written consent from **CNHi**.

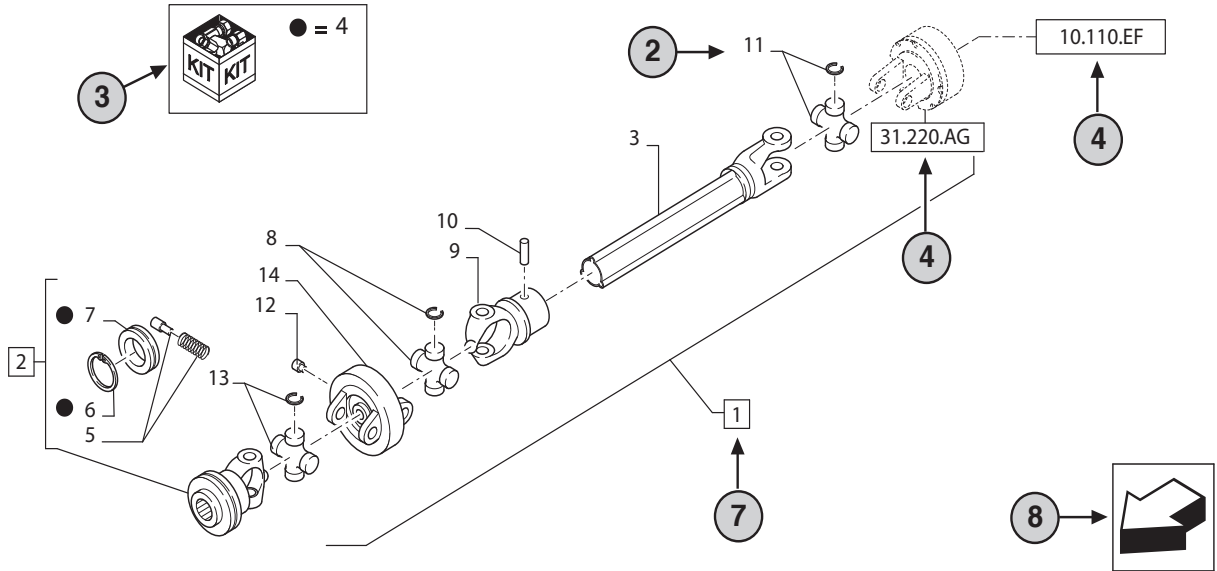
31.220.AD

01

p1

10/2014

VAR - 123782, 789101,987654 - PTO - D650



STANDARD ← (6)

(23)

(9)

(10)

31.220.AD

01

p1

10/2014

VAR - 123782, 789101,987654 - PTO - D650

(11)

(12)

(13)

(14)

REF	FN	PART NUMBER	YR/SN	QTY	DESCRIPTION
1	1	86529340	(20)	1	SHAFT PTO, Incl 2 - 11
2	(15)	84014007		1	YOKE, Incl 4 -7 ← (7)
3	(16)	NSS		1	NOT SERVICED SEPARATELY, SHAFT, 350mm, Incl in 1
4		84004292		1	KIT, Seal Kit, Incl 6, 7 (17)
4		{84058743}		1	KIT, Seal Kit, Incl 6, 7
(2)	(18)	(19)	(21)	(22)	
		1 = FOR ITALY ONLY ← (5)			

MODELS ← (1)


- 1 Model Number and Model Description
- 2 Reference - Figure call-out of the part number.
- 3 Parts supplied in repair kits per symbol reference.
- 4 31.220.AD Part illustrated on the **Page** or in the **Figure** indicated, or calls for **Variations** or **Details**. Indicates components shown in detail elsewhere in the catalogue under the figure number shown.
- 5 Footnote references
- 6 Figure notes
- 7 1 2 Includes item(s) (See Description within partlist).
- 8 Orientation. (Arrow indicates front of the machine). 
- 9 Figure description.
- 10 General information of the figure.
- 11 Figure title number that aligns with the SRT. Standard Repair Time.
- 12 **Sequence** code within the assembly.
- 13 Page number within the sequence code.
- 14 **Date** of printing or updating of page (month-year).
- 15 **Note** - Relating to the Part Number. There is a key to symbols and abbreviations at the bottom of the text page.
- 16 Non-serviced parts.
- 17 Further description of the part to help confirm identification.
- 18 Not available as service part.
- 19 Part Number.
- 20 To be defined.
- 21 Total **Quantity** of the Part referred to in the page.
The quantity can be replaced by the following indications:
AR = quantity as requested.
- 22 Part **Description**.
- 23 Variant Codes

TABLE OF CONTENTS

03A01	ENGINE, CYLINDER BLOCK, HEAD & RELATED PARTS, 3-CYLINDER DIESEL
03A02	KIT, STEPPED STUD ENGINE BLOCK, 12-86/
03B01	CRANKSHAFT, FLYWHEEL & RELATED PARTS, 3 CYLINDER ENGINE
03C01	CAMSHAFT, ROCKER ARMS, VALVES & RELATED PARTS, 3 CYLINDER ENGINE
03D01	OIL PUMP & OIL PAN, SUMP, 3 CYLINDER ENGINE
03E01	MANIFOLD & EXHAUST SYSTEM, DIESEL, 3 CYLINDER ENGINE
03F01	PISTONS & CONNECTING RODS, DIESEL
03G01	ENGINE GASKET KITS
03H01	RADIATORS & RELATED PARTS
03J01	WATER PUMP & RELATED PARTS
03L01	FUEL SYSTEM, DIESEL, ROTOR INJECTOR PUMP
03M01	FUEL FILTER, DUAL
03N01	FUEL SEDIMENTER & FILTER ASSEMBLY
03P01	FUEL INJECTION PUMP, ROTOR
03Q01	FUEL INJECTOR ASSEMBLY
03R01	AIR CLEANER ASSEMBLY
03S01	PRIMER ASSEMBLY, FUEL, NH-E
03V01	POWER TAKE-OFF - NH-E
03W01	13" CLUTCH ASSEMBLY - NH-E
03X01	TRANSMISSION ASSEMBLY - NH-E
04A01	ENGINE, CYLINDER BLOCK, HEAD & RELATED PARTS
04A02	KIT, STEPPED STUD ENGINE BLOCK, 12-86/
04AA01	ENGINE, CYLINDER BLOCK & RELATED PARTS
04B01	CRANKSHAFT, FLYWHEEL & RELATED PARTS
04BB01	CRANKSHAFT, FLYWHEEL & PISTONS
04C01	CAMSHAFT, ROCKER ARM, VALVES & RELATED PARTS
04C02	ENGINE GASKET KITS
04CC01	CAMSHAFT, ROCKER ARMS, VALVES & RELATED PARTS
04D01	OIL PUMP & OIL PAN, SUMP
04DD01	OIL PUMP & PAN
04E01	MANIFOLD & EXHAUST SYSTEM - BSD442, BSD444
04E02	MANIFOLD, TURBOCHARGER & EXHAUST SYSTEM - BSD444TS
04E03	MANIFOLD - BSD444T
04EE01	MANIFOLD ASSEMBLY & RELATED PARTS
04F01	TURBOCHARGER ASSEMBLY
04FF01	TURBOCHARGER ASSEMBLY - BSD444HT

TABLE OF CONTENTS

04FF02	TURBOCHARGER RELATED PARTS - BSD444HT
04G01	COOLER ASSEMBLY, OIL
04GG01	WATER PUMP & RELATED PARTS
04H01	PISTONS & CONNECTING RODS
04HH01	FUEL SYSTEM
04J01	RADIATORS & RELATED PARTS
04JJ01	STARTING MOTOR ASSEMBLY, DIESEL, 5" DIAMETER
04JJ02	STARTING MOTOR ASSEMBLY, DIESEL, 5" DIAMETER
04K01	WATER PUMP & RELATED PARTS
04KK01	ALTERNATOR ASSEMBLY, BSD444HT
04KK02	ALTERNATOR ASSEMBLY, 45 AMP., 8-87/
04L01	FUEL SYSTEM - BSD442
04L02	FUEL SYSTEM, W/INLINE PUMP, BSD444, BSD444T
04L03	FUEL SYSTEM, W/DPS ROTARY INJECTION PUMP
04M01	FUEL FILTER, DUAL
04M02	SEDIMENTER & FILTER ASSEMBLY
04N01	FUEL INJECTION PUMP, ROTOR - BSD442, BSD444, BSD444T
04N02	FUEL INJECTION PUMP, INLINE - BSD442N, BSD444N, BSD444T
04N03	FUEL PUMP, DPS ROTARY FUEL INJECTION, UPPER HALF
04N04	DPS FUEL INJECTION PUMP, ROTARY, LOWER HALF
04P01	TUBE & CLAMP ASSEMBLY, 4 CYLINDER
04Q01	FUEL INJECTOR ASSEMBLY
04R01	FUEL PUMP ASSEMBLY
04S01	AIR CLEANER ASSEMBLY
04V01	POWER TAKE-OFF - NH-E
04W01	13" CLUTCH ASSEMBLY - NH-E
04X01	TRANSMISSION ASSEMBLY - NH-E
06A01	ENGINE, BLOCK, HEAD & RELATED PARTS
06A02	KIT, STEPPED STUD ENGINE BLOCK, 12-86/
06B01	CRANKSHAFT, FLYWHEEL & RELATED PARTS
06C01	CAMSHAFT
06D01	PISTONS & CONNECTING RODS
06E02	OIL PUMP, OIL PAN & RELATED PARTS
06G01	MANIFOLD - BSD666
06G02	MANIFOLD & TURBOCHARGER - BSD666T, BSD666TI
06G04	TURBOCHARGER ASSEMBLY, AIRESEARCH DESIGN - BSD666T, BSD666TI

TABLE OF CONTENTS

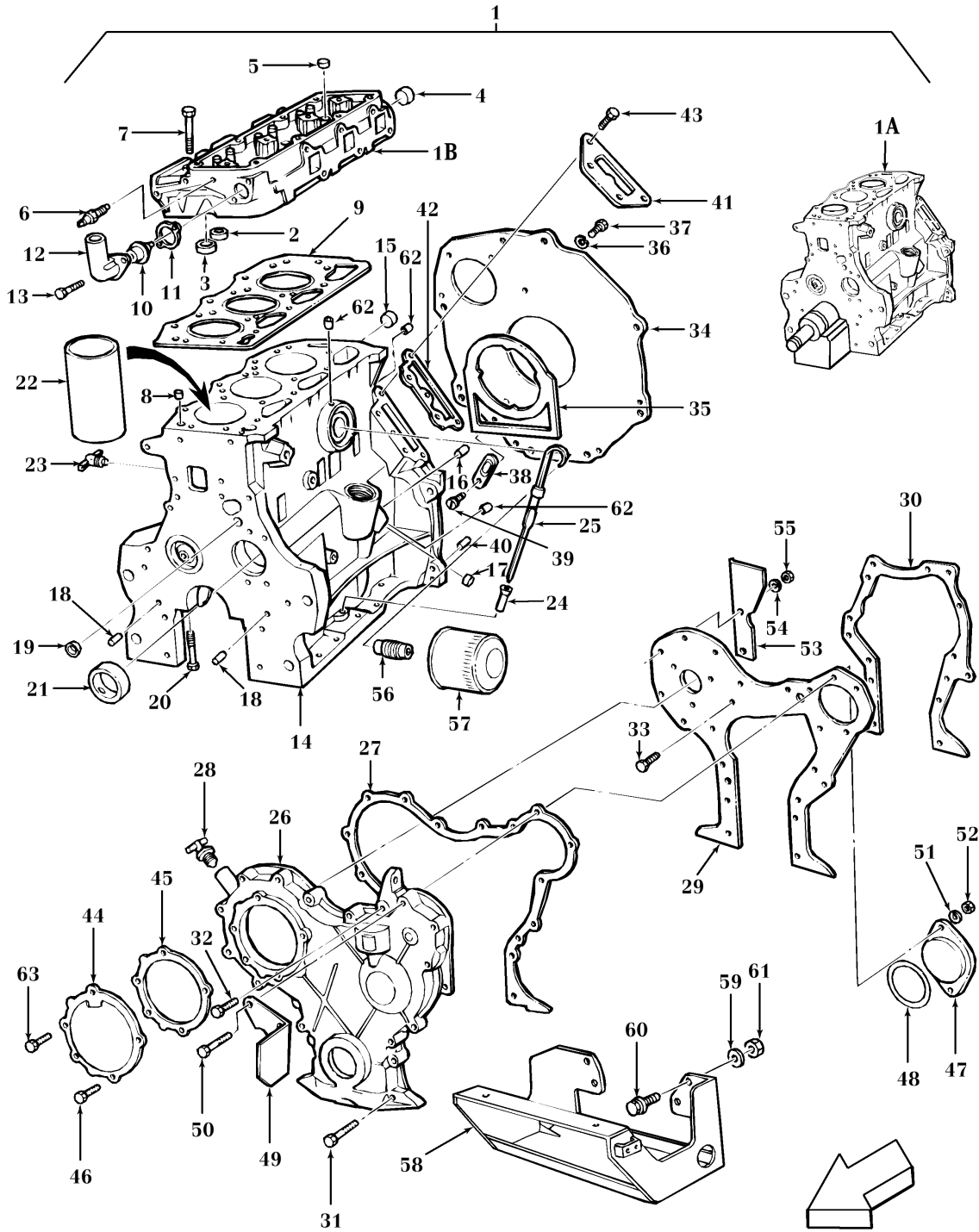
06H01	OIL COOLER & FILTER - BSD666TI
06J01	ENGINE TURBINE HEAT EXCHANGER - BSD666TI
06J02	FAN ASSEMBLY, TURBINE ENGINE HEAT EXCHANGER - BSD666TI
06K01	RADIATOR, OIL COOLER & RELATED PARTS
06L01	WATER PUMP, PULLEY & RELATED PARTS
06M01	BRACKET ASSEMBLY & THERMOSTAT HOUSING
06N01	FUEL SYSTEM
06P01	FUEL SEDIMENTER & FILTER ASSEMBLY, 81/10-88
06P02	FUEL SEDIMENTER & FILTER ASSEMBLY, 11-88/
06Q01	PRIMER ASSEMBLY, FUEL
06R01	FUEL INJECTION PUMP
06S01	FUEL INJECTOR ASSEMBLY
06T01	FUEL PUMP ASSEMBLY
06U01	AIR CLEANER & RELATED PARTS - BSD666
06U02	AIR CLEANER & RELATED PARTS, BSD666T
06U03	AIR CLEANER & RELATED PARTS, BSD666TI
06X01	POWER TAKE-OFF - NH-E
06Y01	13" CLUTCH ASSEMBLY - NH-E
03T01	STARTER MOTOR ASSEMBLY, DIESEL, 4-1/2" DIAMETER, 81/8-82
03T02	STARTER MOTOR ASSEMBLY, DIESEL, 4-1/2" DIAMETER, U.S.
03T03	STARTER MOTOR ASSEMBLY, DIESEL, 5" DIAMETER
03T04	STARTER MOTOR ASSEMBLY, DIESEL, 4-1/2" DIAMETER
03T05	STARTER MOTOR ASSEMBLY, DIESEL, 5" DIAMETER
03U01	ALTERNATOR ASSEMBLY, NH-E
03U02	ALTERNATOR ASSEMBLY
03U03	ALTERNATOR ASSEMBLY, 55 AMP
04T01	STARTING MOTOR ASSEMBLY, DIESEL, 5" DIAMETER
04T02	STARTING MOTOR ASSEMBLY, DIESEL, 5" DIAMETER
04U01	ALTERNATOR ASSEMBLY
04U02	ALTERNATOR ASSEMBLY
04U03	ALTERNATOR ASSEMBLY, 55 AMP
06V01	ALTERNATOR ASSEMBLY, 72 AMP
06V02	ALTERNATOR ASSEMBLY, 70 AMP
06W01	STARTING MOTOR ASSEMBLY, DIESEL, 5" DIAMETER
06W02	STARTING MOTOR ASSEMBLY, DIESEL, 5" DIAMETER

SECTION INDEX

GENERAL & PICTORIAL INDEX

03A01	ENGINE, CYLINDER BLOCK, HEAD & RELATED PARTS, 3-CYLINDER DIESEL
03A02	KIT, STEPPED STUD ENGINE BLOCK, 12-86/

ENGINE, CYLINDER BLOCK, HEAD & RELATED PARTS, 3-CYLINDER DIESEL



ENGINE, CYLINDER BLOCK, HEAD & RELATED PARTS, 3-CYLINDER DIESEL

REF	FN	PART NUMBER	YR/SN	QTY	DESCRIPTION
1	1	82840607		1	ENGINE Assy., Complete, 192 C.I.
1	2	82840597		1	ENGINE Assy., Complete, 192 C.I.
1	1	82841436		1	ENGINE Assy., Complete, 201 C.I.
1		87298059		1	REMAN-REPLACEMENT EN Assy., Complete, 201 C.I. NHNA Only
1		87298060		1	CORE-REPLACEMENT ENG Return Number
1	2	82840598		1	ENGINE Assy., Complete, 201 C.I.
1	1	82840609		1	ENGINE Assy., Complete, 201 C.I., W/Headland Pistons
1	2	82840599		1	ENGINE Assy., Complete, 201 C.I., W/Headland Pistons
1A	3	E6NN6009XC		1	SHORT ENGINE Block, Short, 192 C.I.
1A		E6NN6009XCC		1	CORE-SHORT ENGINE Return Number, Block, Short, 192 C.I.
1A	3	E6NN6009JA		1	SHORT ENGINE Block, Short, 175 C.I.
1A	3	E6NN6009LB		1	SHORT ENGINE Block, Short, 201 C.I.
1A		E6NN6009LBR		1	REMAN-SHORT ENGINE Remanufactured, Block, Short, 201 C.I.
1A		E6NN6009LBC		1	CORE-SHORT ENGINE Return Number
1A		83956415C		1	SHORT ENGINE Return Number, Block, Short, 201 C.I.
1A	3	E6NN6009YC		1	SHORT ENGINE Block, Short, W/Hydraulic Pump Gear, 201 C.I., W/Headland Pistons
1A		84227819R		1	REMAN-SHORT ENGINE Remanufactured, Block, Short, 201 C.I., W/Headland Pistons
1A		84227819C		1	CORE-SHORT ENGINE Return Number, Block, Short, 201 C.I. W/Headland Pistons
1A	3	E6NN6009XC		1	SHORT ENGINE Block, Short, 175 C.I.
1A		E6NN6009XCC		1	CORE-SHORT ENGINE Return Number, Block, Short, 175 C.I.
1A	3	E6NN6009LC		1	SHORT ENGINE Block, Short, 201 C.I.
1A		84227816R		1	REMAN-SHORT ENGINE Reman Short Engine For New P/N E6NN6009LC

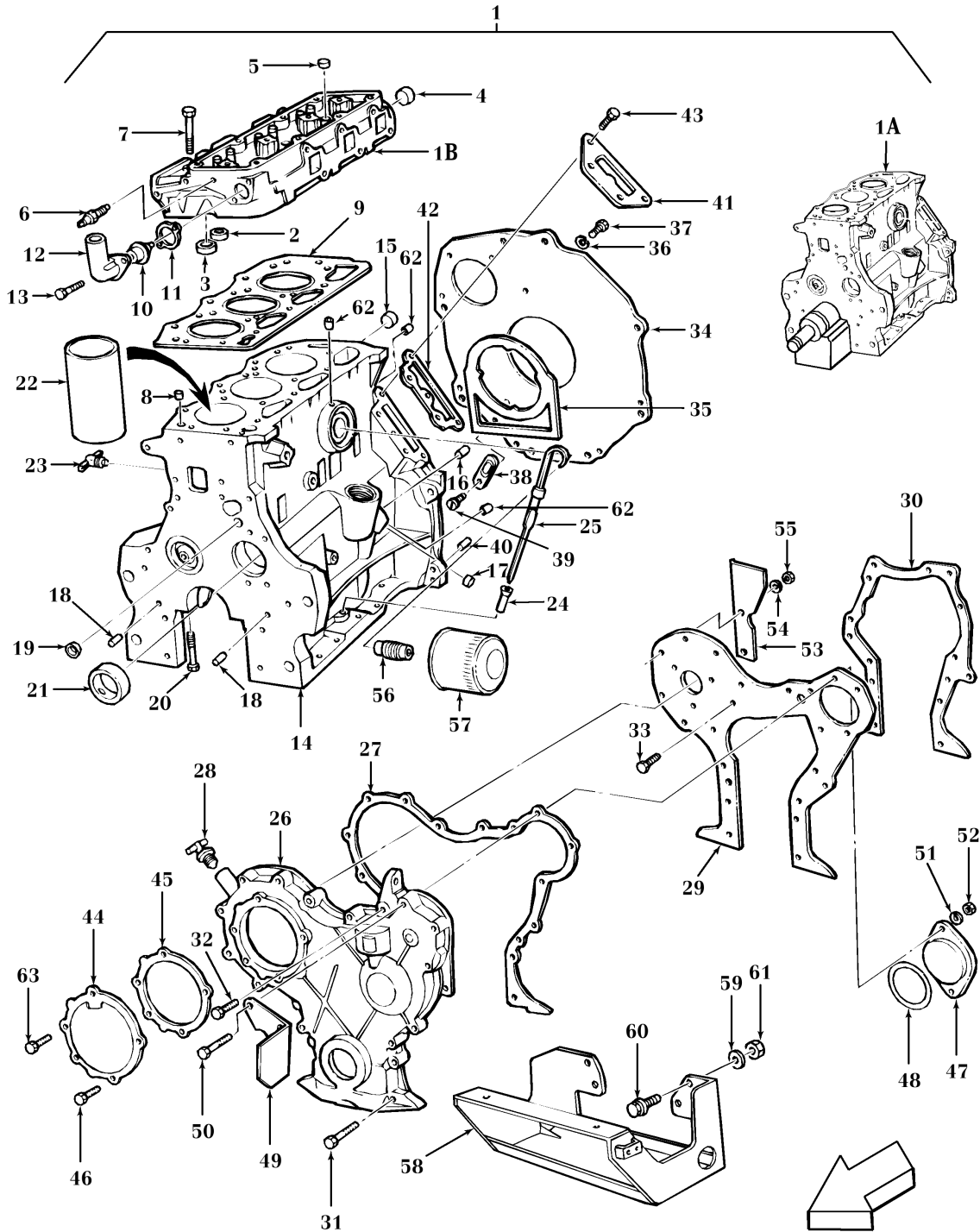
(1) NHNA Only

(2) NH-E Only

(3) Includes all internal Parts.

**BSD332-FORD 3 CYL ENGINE BSD333-FORD 3 CYL ENGINE
BSD333H-FORD 3 CYL DIESEL ENGINE**

ENGINE, CYLINDER BLOCK, HEAD & RELATED PARTS, 3-CYLINDER DIESEL

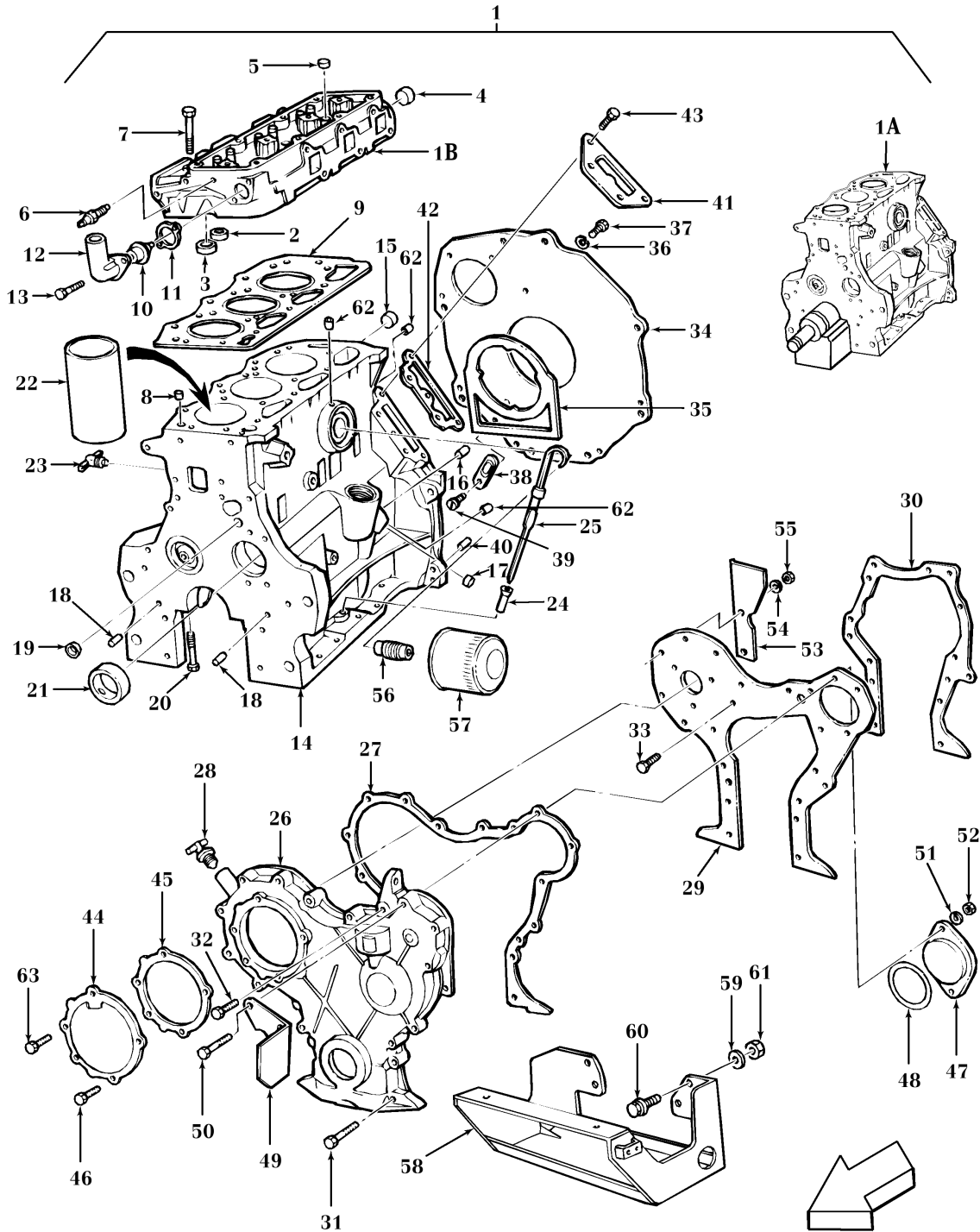


ENGINE, CYLINDER BLOCK, HEAD & RELATED PARTS, 3-CYLINDER DIESEL

REF FN	PART NUMBER	YR/SN	QTY DESCRIPTION
1A	84227816C		1 CORE-SHORT ENGINE Return Number
1A	81869944		1 KIT Kit for 84227816R -- Studs, Nuts and Washers
1A	E6NN6009LCC		1 CORE-SHORT ENGINE Return Number, Block, Short, 201 C.I.
1A	83961338C		1 CORE-SHORT ENGINE Return Number, Block, Short, 201 C.I.
1B	87800092		1 CYLINDER Head Assy.
1B	87800092R		1 REMAN-CYLINDER HEAD BSD332, BSD333, BSD333H
1B	87800092C		1 CORE-CYLINDER HEAD Return Number
1B	87800093		1 CYLINDER HEAD Head Assy., 201 C.I., W/Headland Piston, Includes: Ref. 2 thru 5
1B	87800093R		1 REMAN-CYLINDER HEAD BSD332, BSD333, BSD333H
1B	87800093C		1 CORE-CYLINDER HEAD Return Number
2	D4NN6056A		3 INSERT Intake Valve, Standard
2	87802103		AR VALVE SEAT Insert, Intake Valve, .010", O/S
2	87802104		AR VALVE SEAT Insert, Intake Valve Seat, .020, O/S
2	87802105		AR VALVE SEAT Insert, Intake Valve, .030" (.762mm) O/S
3	83909432		3 VALVE SEAT Insert, Exhaust Valve, Standard
3	D4NN6057B		AR INSERT Exhaust Valve, .010" (.254mm), O/S
3	D4NN6057C		AR INSERT Exhaust Valve, .020" (.508mm), O/S
3	87800559		AR INSERT Exhaust Valve, .030" (.762mm), O/S
4	83957025		1 PLUG 1.75" (44.5mm)
	83957026		AR PLUG 1.81" (46.0mm)
	83957022		AR PLUG 1.18" (30.0mm)
5	83957021		3 PLUG 1.13" (28.7mm)
6	9712608		1 TEMPERATURE SENDER 3/8" - 18 Sender Assy., Water Temperature Indicator

**BSD332-FORD 3 CYL ENGINE BSD333-FORD 3 CYL ENGINE
BSD333H-FORD 3 CYL DIESEL ENGINE**

ENGINE, CYLINDER BLOCK, HEAD & RELATED PARTS, 3-CYLINDER DIESEL



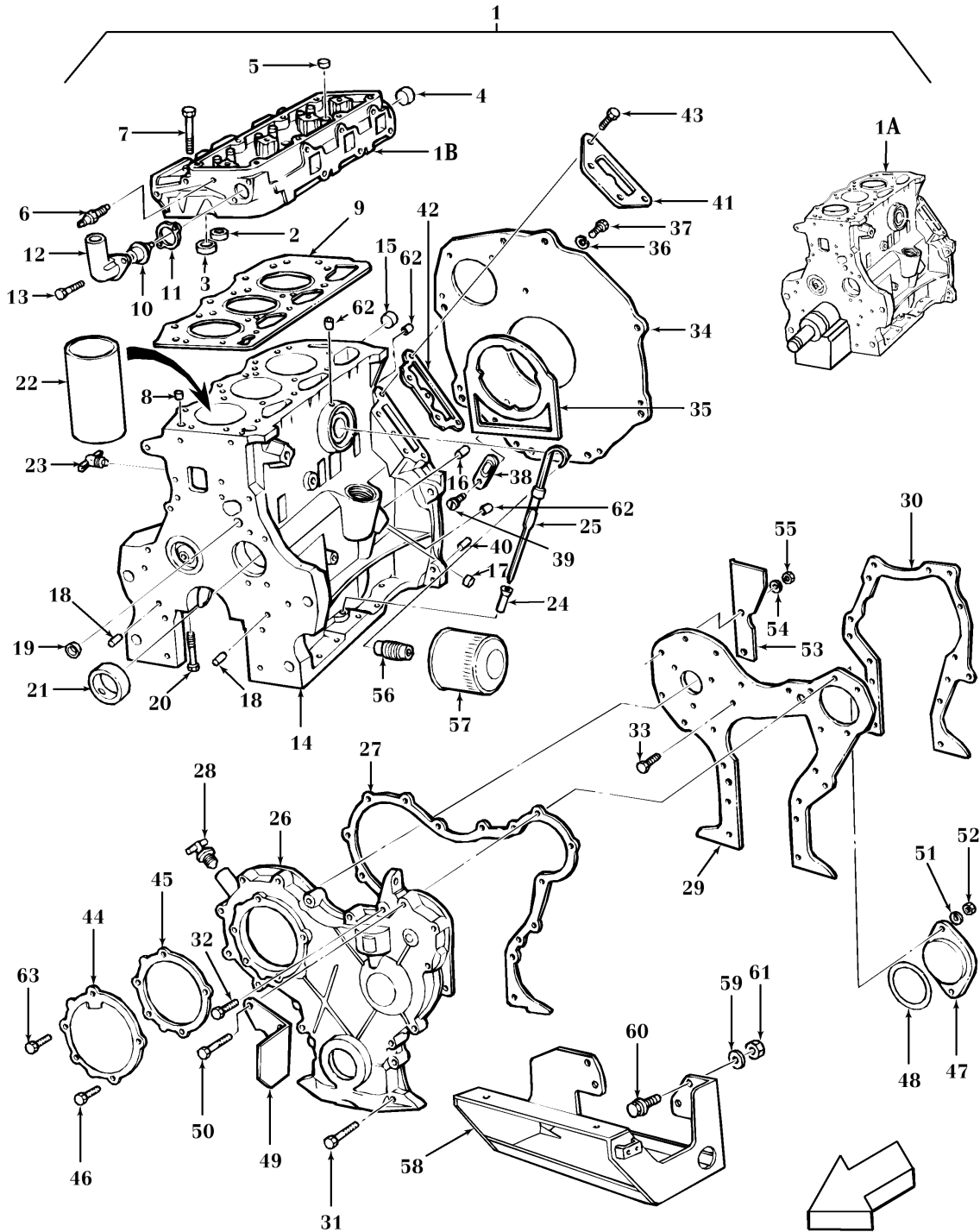
ENGINE, CYLINDER BLOCK, HEAD & RELATED PARTS, 3-CYLINDER DIESEL

REF FN	PART NUMBER	YR/SN	QTY DESCRIPTION
	81873524		1 PRESSURE SWITCH 1/4" - 18 NPTF SWITCH, PRESSURE, Oil Sender
7	E1NN6065AA		10 BOLT Hex, 1/2"-13 x 4-3/4"
7	87802206		10 BOLT Cyl Hd, 9/16" - 12 x 130mm 9/16"-12 UNC 2A x 5-1/32"
	377490S		10 WASHER 13.46mm ID x 26.98mm OD x 4.32mm Thk Flat, 1/2"
8	83960218		2 BUSHING 15.16mm ID x 17.21mm OD x 11.2mm L Dowel, Split, .676" x .44"
8	D5NN6A008A		2 DOWEL Head, Bolts, 9/16"
9	82845222		1 CYLINDER HEAD GASKET Gasket, 175 C.I.
9	87801653		1 CYLINDER HEAD GASKET 1.8mm Thk Gasket, Head
10	E0NN8575AA		AR THERMOSTAT Assy., 180°
11	E9NN8255AA		1 GASKET 0.8mm Thk
12	C7NN8594B		1 HOUSING Connection
13	358720S36		2 SCREW & Washer Assy., 5/16"-18 x 1.12
14	E2NN6010AC		1 BLOCK Assy., Cylinder, BSD 329
14	E6NN6010AA		1 CYLINDER BLOCK Block Assy., Cylinder, BSD 329
14	F0NN6010AA		1 BLOCK Assy., Cylinder, BSD 329
14	1 F0NN6010BD		1 BLOCK Assy., Cylinder, BSD332, BSD333, BSD333H, Includes: Block & Ref. 15 thru 21
14	F0NN6010BD		1 BLOCK Assy.
15	83957025		2 PLUG 1.75" (44.5mm)
	83957023		2 PLUG 1.50" (38.0mm)
	83957024		AR CUP PLUG 1.57" PLUG, CUP, (39.6mm) 1.57"
	83957026		AR PLUG 1.81" (46.0mm)
	383442S		AR PLUG .931 Cup, O/S
16	502046		1 PLUG Pipe, 1/8"-27
17	80781		1 PLUG 3/8" - 18 NPT Pipe, , Drain Sq Hd, 3/8"-18
18	81808472		2 DOWEL Pin, Dowel, 3/8" x 1-1/8"
19	378336S36		2 PLUG Cup, Plug, .636
19	83956679		1 PLUG .824

(1) Also order Stepped Stud Kit FP-575.

**BSD332-FORD 3 CYL ENGINE BSD333-FORD 3 CYL ENGINE
 BSD333H-FORD 3 CYL DIESEL ENGINE**

ENGINE, CYLINDER BLOCK, HEAD & RELATED PARTS, 3-CYLINDER DIESEL



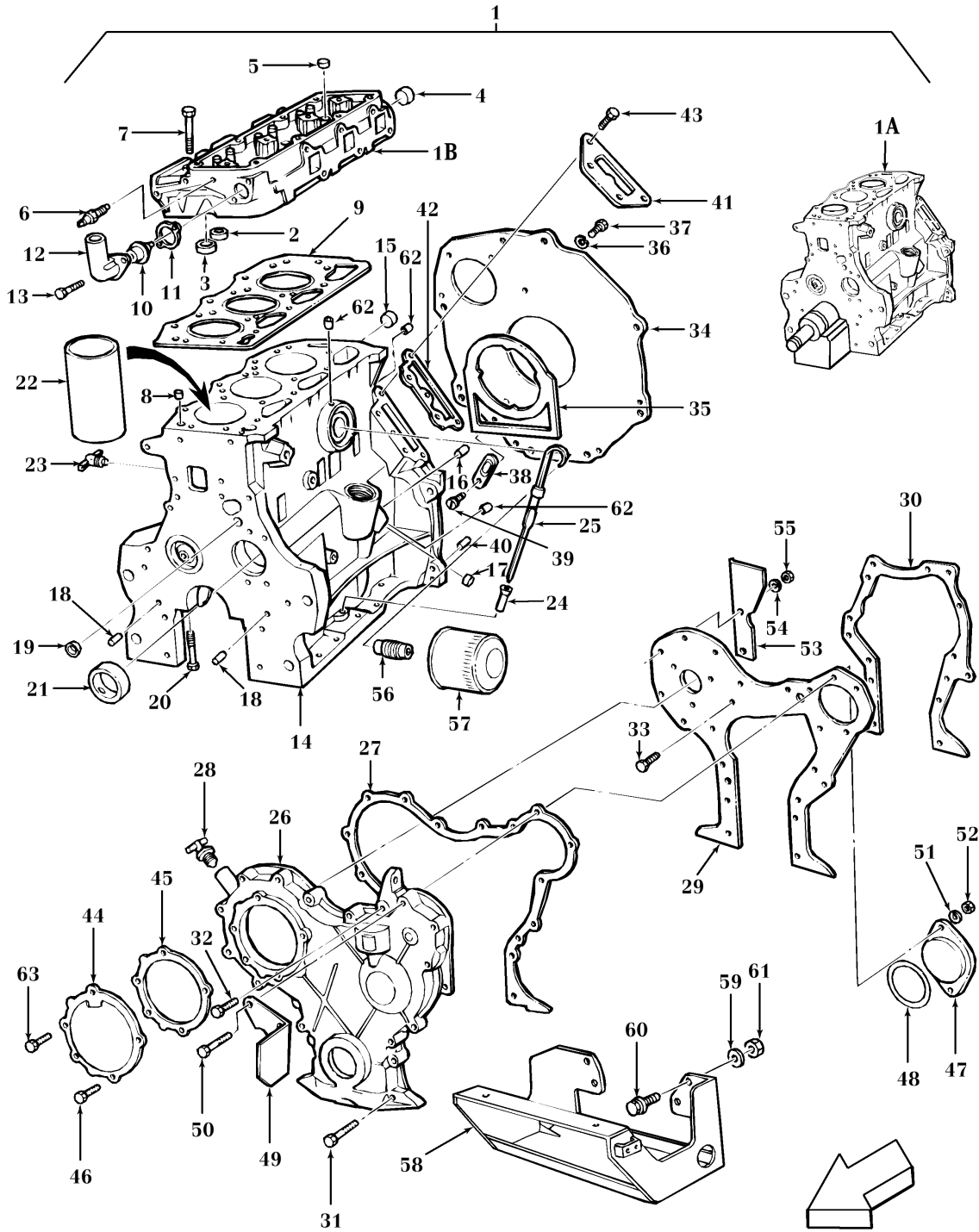
ENGINE, CYLINDER BLOCK, HEAD & RELATED PARTS, 3-CYLINDER DIESEL

REF FN	PART NUMBER	YR/SN	QTY DESCRIPTION
20	379548S		8 BOLT Hex, 9/16"-12 x 4.45
21	1 87800499		4 CAMSHAFT BEARING Bearing, Camshaft, Front
63	83949109		2 BOLT Flng, 5/16" x 5/8", Gr 5 Bolt, Cap, Flg Hd, G5, 5/16"-18 x .62"
22	C5NN6055A		3 SLEEVE Bore, 4.2", 4.1 ID x 4.32 OD
22	D7NN6055A		3 LINER, ENGINE CYLIND Sleeve, Bore, 4.4", 4.3 ID x 4.5 OD
22	D0NN6055A		AR SLEEVE 4.19 ID x 4.4 OD Use only W/Blocks Rebored to 4.4" (111.76mm)
23	81465471		1 DRAINCOCK/TAP SUPPLY Draincock
24	86584393		1 TUBE 0.38" OD x 4.46" L
24	E2NN6784AA		1 TUBE 0.377" OD x 4.04" L
25	87801534		1 DIPSTICK Indicator
26	D9NN6059AA		1 COVER
26	87802503		1 COVER
27	83959876		1 GASKET 0.89mm Thk
27	83959876		1 GASKET 0.89mm Thk
28	83907851		1 FILLER CAP Cap Assy.
29	E5NN6C044AA		1 COVER Plate
29	E5NN6C044AA		1 COVER Plate
30	E6NN6C045BA		1 GASKET
31	378339S36		12 SCREW Hex, 5/16" - 18 x 2.12" & Washer, Hex, 5/16"-18 x 2.12
31	88346		2 BOLT Hex, 5/16" - 18 x 2 1/2", Gr 5 w/Washer Hex, 5/16"-18 x 2 1/2", G5
31	57641S36		2 SCREW Cap, HH, W/Washer, G5, 5/16"-18 x 2-1/2"
31	57640S36		4 SCREW Cap, HH, W/Washer, G5, 5/16"-18 x 2-1/4"
31	57651S36		8 SCREW Hex, 3/8" - 16 x 2-1/4" Cap, HH, W/Washer, G5, 3/8"-16 x 2-1/4"
32	88346		1 BOLT Hex, 5/16" - 18 x 2 1/2", Gr 5
32	57648S36		1 SCREW Cap, HH, W/Washer, G5, 3/8"-16 x 1-1/2"
33	45964S36		4 SCREW Cap, HH, G5, Self-Locking, 5/16"-18 x 3/4"
34	E5NN6A373AB		1 PLATE

(1) Use for Service

**BSD332-FORD 3 CYL ENGINE BSD333-FORD 3 CYL ENGINE
 BSD333H-FORD 3 CYL DIESEL ENGINE**

ENGINE, CYLINDER BLOCK, HEAD & RELATED PARTS, 3-CYLINDER DIESEL

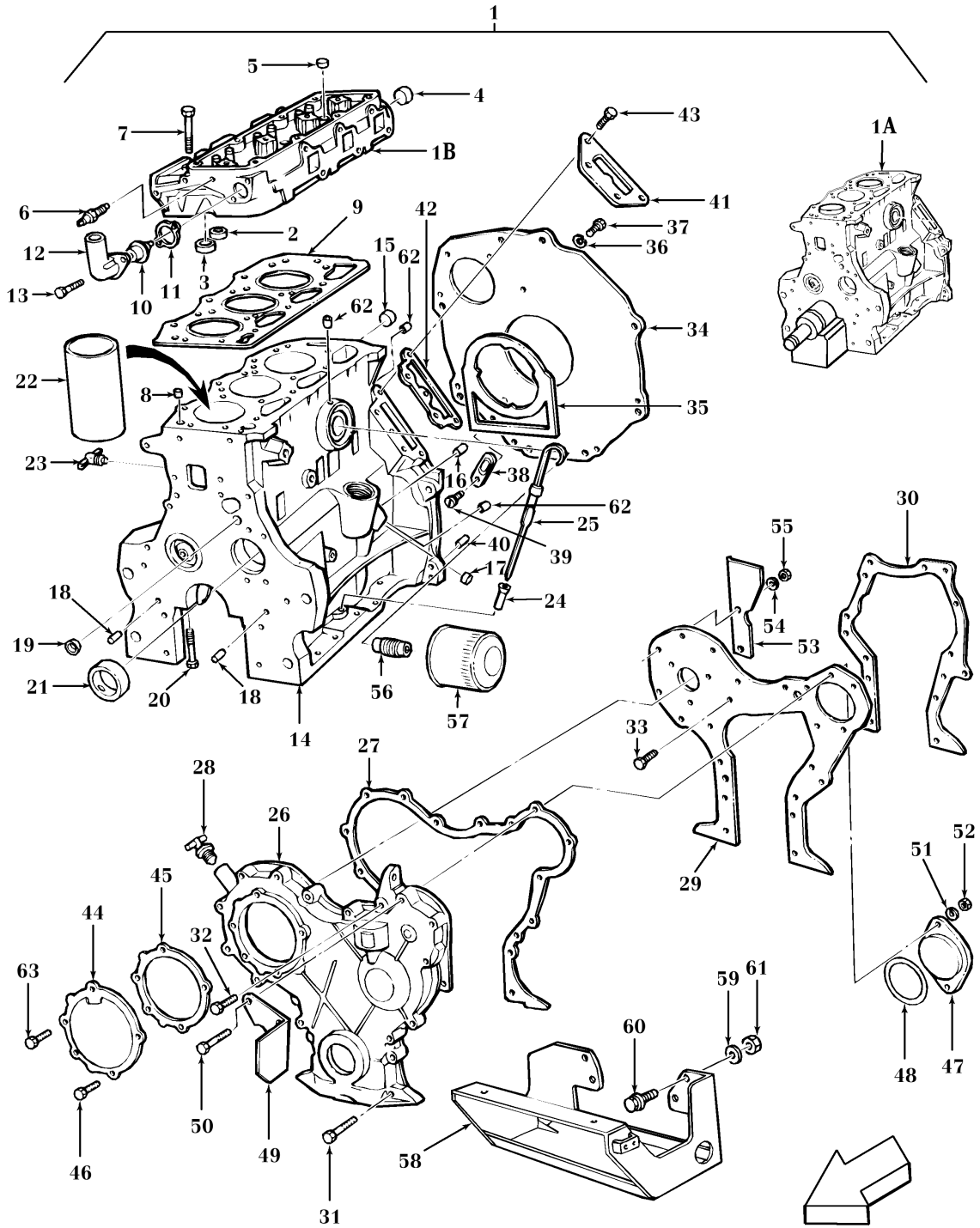


ENGINE, CYLINDER BLOCK, HEAD & RELATED PARTS, 3-CYLINDER DIESEL

REF FN	PART NUMBER	YR/SN	QTY DESCRIPTION
35	C7NN6N008B		1 GASKET 3.3mm Thk
36	80680		AR LOCK WASHER 3/8 0.381 CST ZND WASHER, LOCK, 3/8"
37	88434		AR BOLT Hex, 3/8" - 16 x 3/4", Gr 5 Screw, Cap, HH, G5, 3/8" - 16 x 3/4"
38	81804217		1 COVER Flywheel Access, Except 3910
38	83917381		1 COVER Cover, Flywheel Access, 3910
39	43392S36		1 SCREW Assy., 5/16"-18 x 5/8"
40	86505157		2 DOWEL 1/2" x 1" Pin, Dowel, 1/2" OD x 1"
41	C7NND852A		1 COVER
42	81822547		1 GASKET 1.52mm Thk
43	81818852		4 SCREW HH, W/Washer, 3/8"-16 x 7/8"
44	C7NN9G524A		1 COVER Fuel Injection Pump
45	83959395		1 GASKET 1.32mm Thk
46	82851916		3 STUD 5/16"-18 x 1.82
47	C5NE3B681A		1 COVER PS Pump
48	379275S94		1 O-RING 0.103" Thk x 3.237" ID, -152, CI 5, 75 Duro 3.237 x .103 (82.22 x 2.62mm)
49	81814206		1 DEFLECTOR Fan, Deflector, L.H.
50	87936		2 BOLT Hex, 3/8" - 16 x 2 1/2", Gr 5
51	80680		2 LOCK WASHER 3/8 0.381 CST ZND WASHER, LOCK, 3/8"
52	9628503		2 NUT 3/8"-16, G5 G5, 3/8"-16
53	E8NN8N630AA		2 DEFLECTOR
54	80681		2 LOCK WASHER 5/16" Washer, Lock, 5/16"
55	9635082		2 NUT 5/16" - 18, Gr 5 G5, 5/16"-18
56	D0NN6890A		1 INSERT Oil Filter
57 1	87800068		1 ENGINE OIL FILTER Filter, Engine Oil
57 2	86546614		1 ENGINE OIL FILTER Filter, Engine Oil
57 2	86546614DS		ENGINE OIL FILTER Filter, Engine Oil
58	86560781		1 PLATE Support
(1)	NH-E Only		
(2)	NHNA Only		

**BSD332-FORD 3 CYL ENGINE BSD333-FORD 3 CYL ENGINE
BSD333H-FORD 3 CYL DIESEL ENGINE**

ENGINE, CYLINDER BLOCK, HEAD & RELATED PARTS, 3-CYLINDER DIESEL



**Thanks very much for your reading,
Want to get more information,
Please click here, Then get the complete
manual**

JustClickHere 

NOTE:

**If there is no response to click on the link above,
please download the PDF document first, and then
click on it.**

**Have any questions please write to me:
admin@servicemanualperfect.com**